

A black and white photograph of a fountain at night. Water is spraying upwards from a dark, flat surface, creating a dense column of droplets. The background is dark with several bright, out-of-focus light sources, likely city lights or street lamps, creating a bokeh effect. The overall mood is dramatic and somewhat somber.

Path of Hate

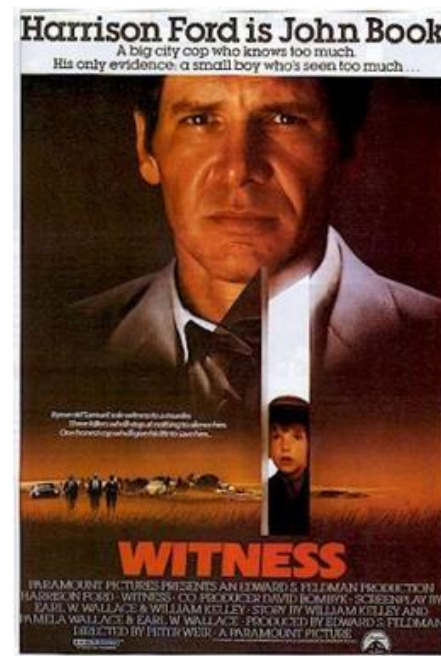
By Luke Nunney

Summary

My idea is a short crime thriller focusing on an old detective who loses his family to a crime syndicate and he is out for revenge he is looking to take something of theirs like they took his family. He does this by going after the leader who killed his family who he has discovered is hiding at the syndicate's warehouse in the old industrial district. It starts with him standing over a grave in the rain looking forlorn and sad as he looks we then see the first flashback which shows him and his family happy in a park playing showing him in particular smiling and laughing. The camera pans round to reveal that the graves belong to his wife and young child. We then see a silhouetted flashback of the gun firing, the bullet casing hitting the floor and then a body hitting the floor before cutting back to the detective looking at the grave. He then turns and walks away with his head down. He gets in his car and sets off to confront the leader at the warehouse and to take his revenge for what he did to him. Whilst in the car he has multiple short flashbacks of his family and he starts to question whether or not he should do what he's about to do. He shakes off the thoughts and keeps going on his way for revenge. As the car pulls up to the warehouse he knows what he has to do. As he enters the building and walks to where he knows he is he pauses briefly, he looks and says I'm sorry before he continues as he busts the door down the criminal leader stands in front of him begging for mercy. As he does this the leader drops to his knees before the screen cuts to black and a gunshot is heard followed by another and then it ends by fading to black.

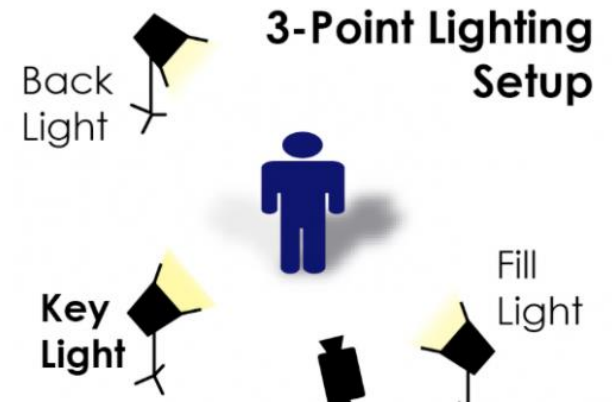
Crime Thriller

A thriller in which the central characters are involved in crime, either in its investigation, as the perpetrator or, less commonly, a victim (generally, this is just a thriller). While some action films could be labelled as such for merely having criminality and thrills, the emphasis in this genre is the drama and the investigative/criminal methods. For example Witness and The Silence of the Lambs.



Lighting

Three point lighting is the standard method of lighting in film making as it gives shadow on the subject yet lights other areas on the subject to show more detail. However this may not be the best option for my film as its in black and white this means that I will need to use the shadows more effectively to grab the audience attention and use the shadows in the same way you would use bright colours.



Cinematography

The cinematography of the film should be used to draw the viewers attention to the emotions of the characters and to show the key events. The low camera angles often used in this genre to portray the power from certain characters and to show the main characters influence. The use of rack focuses also helps to show the emotion by drawing the viewers attention to the focused area of the screen and draw them to what you want them to see. Also shooting the majority of the film from low down means that the sense of power that is felt is increased and makes all of the film seem imposing.

Editing

In a crime thriller the cuts between the scenes slowly but uses hard cuts to go between them, the low speed of the cutting can slow the film down and helps the emotion come across through the slow pace and dark image. However for endings and over closed scenes crime thrillers faded out which fits with the slow speed of the film. The flashbacks are edited together quickly and move between various shots of the flashback's as it's the only part of the film with any action and the fast cuts are used to speed up the action and drama of the flashback.

Soundtrack

The soundtrack of a crime is deep and slow to complement tone of the visuals of the film. The noise made by footsteps as well as the rain coming down will be louder than it would be normally as the sound of heavy rain and heavy footsteps adds to the dark and saddening mood. The use of deep and slow music is also used for this. The use of the music can also show the change of pace or mood for example for a flashback in which a lot of action happens the music may speed up to show the change.

Codes and Conventions

- Low Key Lighting
- Quick Cuts
- Shadows
- Tension Music
- Changes of angles of shots
- Diegetic sounds of heavy breathing
- Black and White shots
- Montage of shots
- Protagonist
- Antagonist